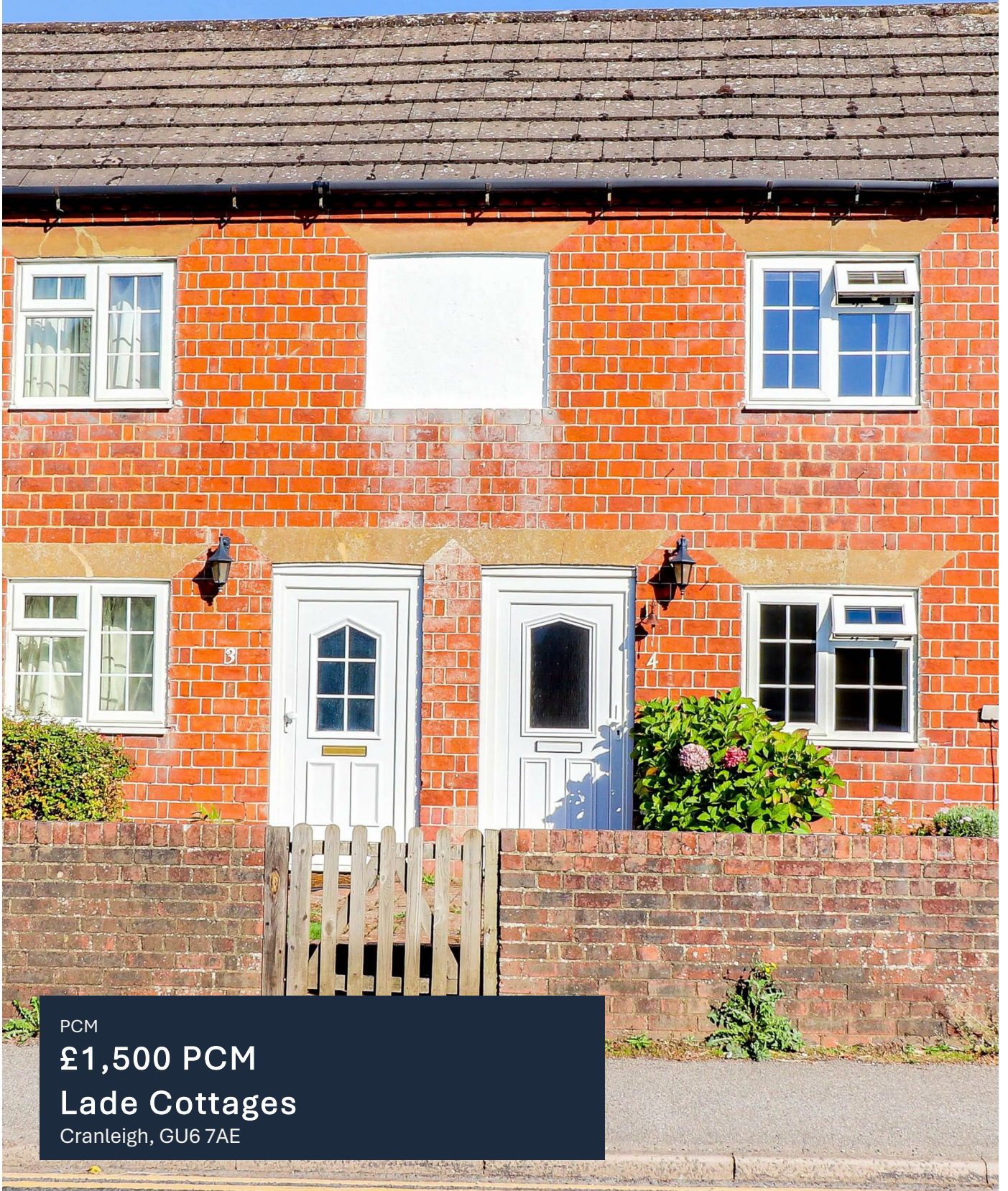


Howard Morley
& Sons



PCM

£1,500 PCM

Lade Cottages

Cranleigh, GU6 7AE



Approximate Gross Internal Area
 72.97 sq m / 785.44 sq ft
 (Excludes Shed)
 Shed Area 12.21 sq m / 131.42 sq ft

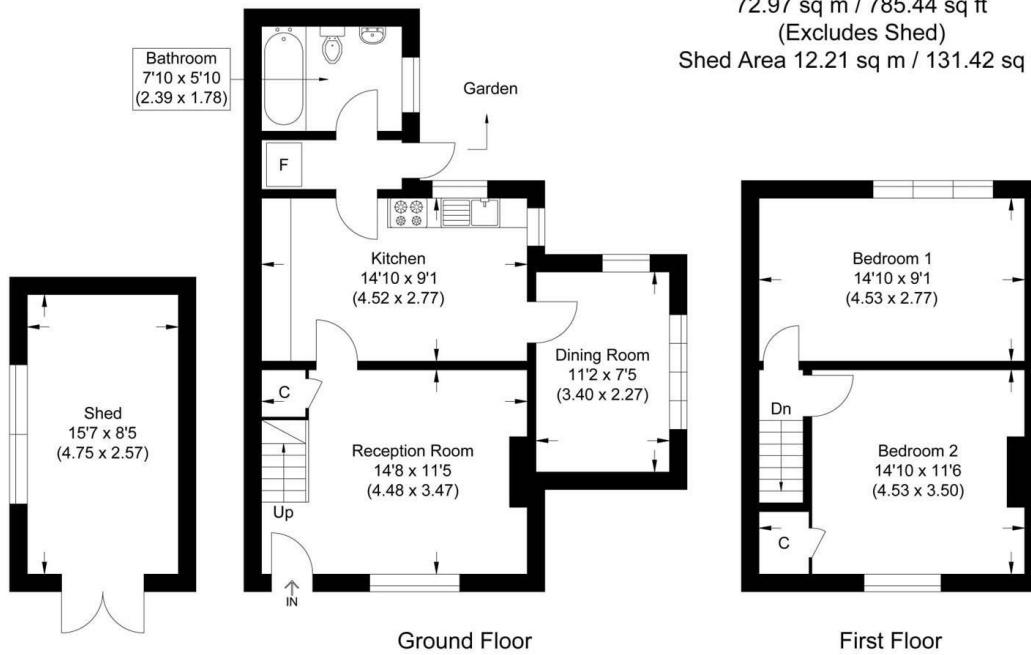


Illustration for identification purposes only, measurements are approximate, not to scale.

2 |

1 |

2 |

Energy Efficiency Rating		Current	Potential
Very energy efficient - lower running costs			
(92 plus)	A		
(81-91)	B		84
(69-80)	C		
(55-68)	D		
(39-54)	E	55	
(21-38)	F		
(1-20)	G		
Not energy efficient - higher running costs			
England & Wales		EU Directive 2002/91/EC	

Agents Note: Whilst every care has been taken to prepare these particulars, they are for guidance purposes only. All measurements are approximate and are for general guidance purposes only and whilst every care has been taken to ensure their accuracy, they should not be relied upon and potential buyers/tenants are advised to recheck the measurements

Howard Morley
& Sons

OFFICE ADDRESS
 1 Kent House
 81 High Street
 Cranleigh
 Surrey

OFFICE DETAILS
 01483 267181
 lettings@hmorley.co.uk
 hmorley.co.uk